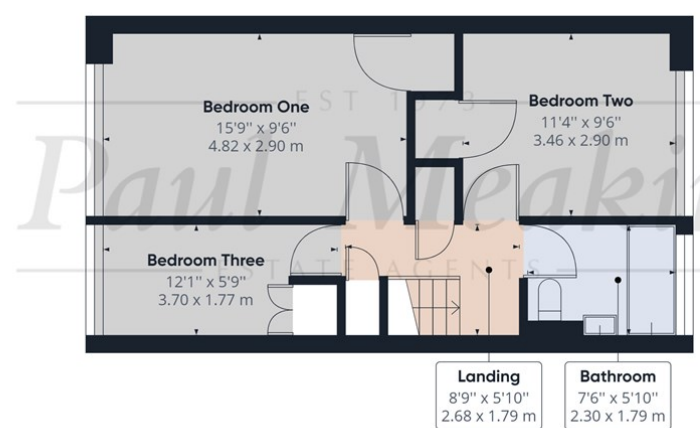




Ground Floor Building 1



Floor 1 Building 1



Approximate total area⁽¹⁾
884.97 ft²
82.22 m²

Reduced headroom
16.09 ft²
1.50 m²

(1) Excluding balconies and terrace:

Reduced headroom
(below 1.5m/4.92ft)

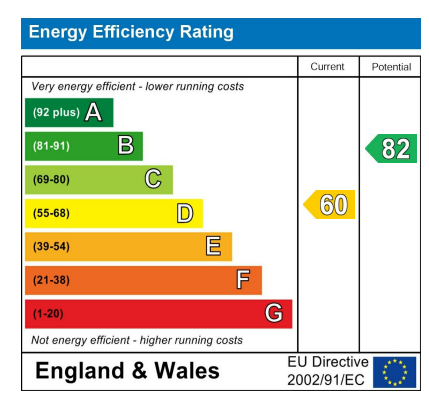
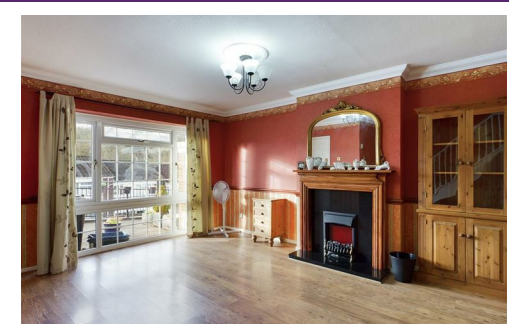
While every attempt has been made to ensure accuracy, all measurements are approximate, not to scale. This floor plan is for illustrative purposes only.

GIRAFFE360



EST 1973
Paul Meakin Asking Price £375,000 Markfield, Croydon, CR0 9HP
ESTATE AGENTS

Welcomed to the market is this CHAIN FREE, well presented mid terraced house, in sought after cul de sac location. This spacious and sizeable home is conveniently located for frequent bus services to surrounding areas, local amenities and Courtwood Primary School, and direct links to central Croydon. Internally the property comprises a large living room, separate kitchen & diner, three substantial bedrooms, family bathroom, and double glazing throughout. The property additionally benefits from private garden and garage. Ideal for a wide variety of buyers; call now to appreciate size, standard and location.



Agents Note: Whilst every care has been taken to prepare these sales particulars, they are for guidance purposes only. All measurements are approximate are for general guidance purposes only and whilst every care has been taken to ensure their accuracy, they should not be relied upon and potential buyers are advised to recheck the measurements

ENTRANCE HALL
LIVING ROOM
10'7" x 15'4" (3.23 x 4.67)
KITCHEN/DINER
10'7" x 15'4" (3.23 x 4.67)
LANDING
BEDROOM ONE
15'9" x 9'6" (4.8 x 2.9)
BEDROOM TWO
11'4" x 9'6" (3.45 x 2.9)
BEDROOM THREE
12'1" x 5'9" (3.68 x 1.75)
BATHROOM
GARDEN
GARAGE

